

Instructions for using the Safety Thru Design FTP site

FTP, or File Transfer Protocol, is a standard network protocol used to exchange and manipulate files over an Internet Protocol (IP) computer network. The FTP site used by Safety Thru Design (STD) is located at ftp.safetythru design.com. To access files on our site, you will need an FTP client such as FTP Navigator. This client may be downloaded to your local computer from various sites such as: <http://www.internet-soft.info/purchase.htm>

or

<http://www.download3k.com/Install-InternetSoft-Corporation-FTP-Navigator.html>

or

<http://www.tucows.com/preview/195126>

Our recommended parameter set for FTP Navigator looks like this:

Server Properties

Cancel OK

Server	User
Name: Safety Thru Design, FTP	User ID: anonymous
FTP Server: ftp.safetythru design.com	Password: you@youremailaddress.com
FTP Port: 21	Account:
Description:	E-Mail: email@mail.com
	<input type="checkbox"/> Anonymous Login
	<input checked="" type="checkbox"/> Save Password
	<input type="checkbox"/> Mask Password
	<input checked="" type="checkbox"/> Passive Mode
	<input type="checkbox"/> Shared virtual host

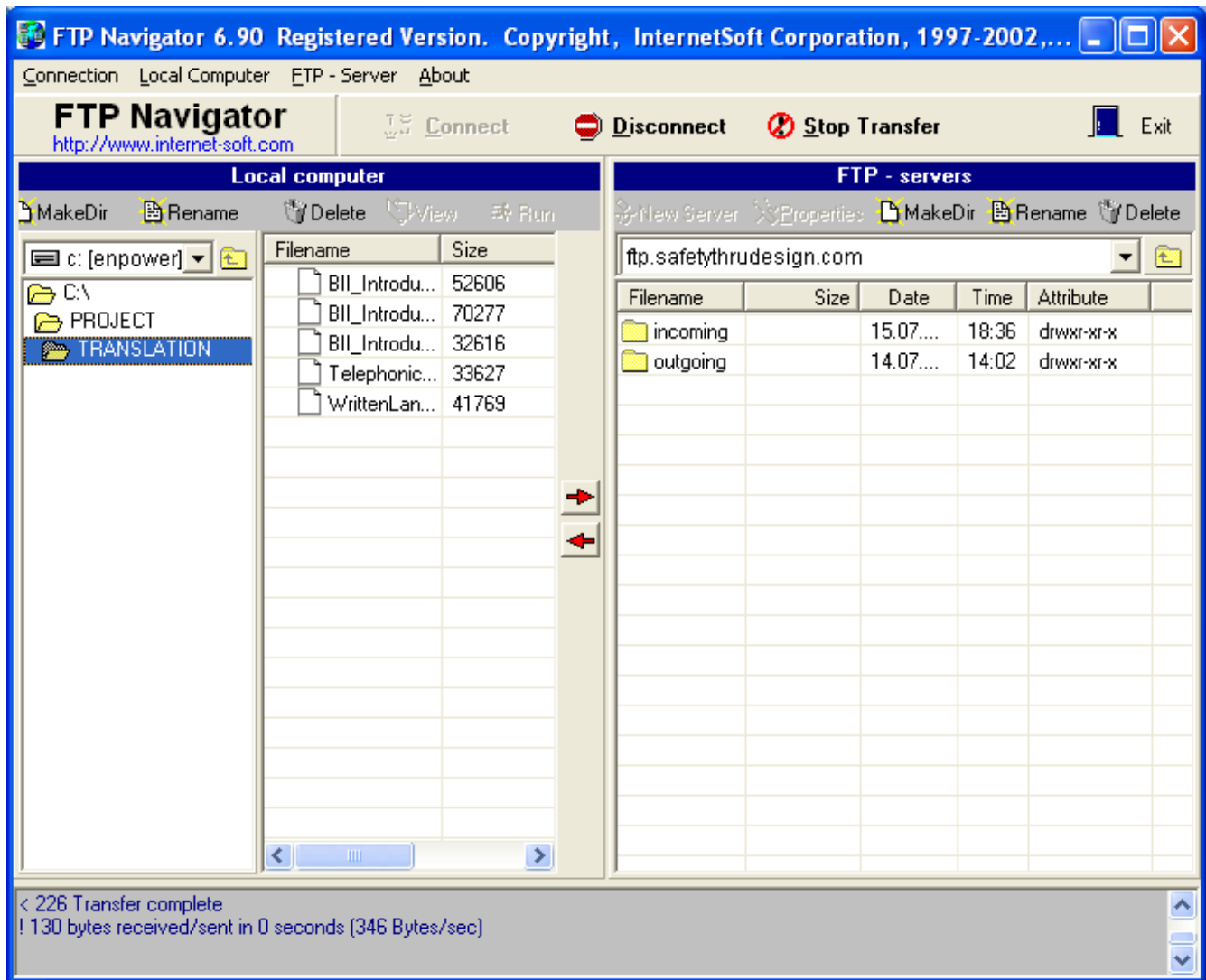
Response Type: Default

Directories

Initial Directory on Local Machine: OEDER_SOLAR\SAFE_DESIGN\CLIENTS [Browse]

Initial Directory on FTP Server: Add "/"

When you arrive at the site, you should see something like this:



The directory shown on the local computer side of the display will be whatever directory you set in the FTP Navigator setup screen. The directory on the FTP server side of the display will show the “incoming” and “outgoing” directories on the STD FTP server.

If a file needs to be uploaded to Safety Thru Design, double-click on the “incoming” directory at the FTP server. This is a directory without public read permissions, so no files will be listed. Select the file on the local computer that needs to be uploaded to STD and click on the arrow in the center of the screen that points in the direction towards the server. The file will be uploaded and you will see transfer progress on the screen as this happens. When uploading is complete, no files will be shown since the public does not have read permission. However, rest assured that the file is there and available to STD. At this point, FTP Navigator may be disconnected and we ask that you send an email to al@safetythrudesign.com saying that a file transfer has taken place.

If a file needs to be downloaded from Safety Thru Design (STD), double-click on the “outgoing” directory at the FTP server. This is a directory has public read permission but no write permission. Use this directory if you have arranged with STD to download a file that you need. STD will have placed the file in this directory for you to download, so all files in this directory will be visible to the public. Select the file on the STD FTP server that needs to be downloaded to your local computer and click on

the arrow in the center of the screen that points in the direction towards your local computer. The file will be downloaded and you will see transfer progress on the screen as this happens. When downloading is complete, you will see the file appear on your local computer. At this point, FTP Navigator may be disconnected.